

संरक्षक

श्री अशोक माहेश्वरी
अध्यक्ष

प्रधान संपादक

श्री अनुज कौशिक
अधिसासी अधिकारी

संपादक

श्री दिलीप सिंह
नगर नियोजक

परामर्श मंडल

श्री मुरारीलाल सूर्यवंशी
सफाई एवं खाद्य
निरीक्षक

श्री हरीश त्यागी
सफाई एवं खाद्य
निरीक्षक

श्री सतीश कुमार
अवर अभियंता (जल)

श्री विजेता श्रीवास्तव
अवर अभियंता
(निर्माण)

श्री ललित त्यागी
प्रभारी लेखाकार

सहायक संपादक

श्री अंकित गोयल
अमृत लिपिक

Newsletter

मासिक प्रकाशन

अंक:

फरवरी

२०१९

पालिका समाचार



श्री अशोक माहेश्वरी
अध्यक्ष

स्वच्छता

ही

सेवा है



श्री अनुज कौशिक
अधिसासी अधिकारी

नगर पालिका परिषद् मोदीनगर, गाजियाबाद

गार्बेज फ्री सिटीज के स्टार रेटिंग में नगर पालिका परिषद् मोदीनगर को २ स्टार घोषित

STAR RATING OF GARBAGE FREE CITIES

Swachh Bharat Mission (Urban)
A Star Rating Programme for Making Cities Garbage Free



CERTIFICATE
Regional Centre for Urban and Environmental Studies,
Lucknow hereby certifies that

District Name: --- **GAZIABAD**

ULB Name: --- **MODINAGAR** ULB Code: --- **800730**

has achieved all the required indicative components outlined under the
Protocol for Star Rating of Garbage Free Cities
and is being declared as

GARBAGE FREE CITY 2 STAR

Effective Date : **6/01/2019**


Er. A.K. Gupta
Additional Director
RCUES, Lucknow


Anurag Yadav,
I.A.S.
State Mission Director,
Swachh Bharat Mission (Urban),
Uttar Pradesh

नगर पालिका परिषद् मोदीनगर, गाजियाबाद

STAR RATING OF GARBAGE FREE CITIES

under Swachh Bharat Mission (Urban)



A SEVEN STAR RATING PROGRAMME FOR MAKING CITIES GARBAGE FREE

VISION

"All cities achieve "Garbage Free" status wherein at any point of time in the day, no garbage or litter is found in any public*, commercial or residential locations (including storm drains and water bodies) in the city (except in litter bins or transfer stations), 100 per cent of waste generated is scientifically managed, all legacy waste has been remediated and city is scientifically managing its municipal solid waste, plastic waste and construction & demolition waste. Additionally, there must be a steady reduction in the waste generated by the city and visible beautification of the city to achieve a clean & aesthetically pleasing city"

DEFINITION

A city can be declared as "Garbage Free" if it complies with the conditions as prescribed under this protocol.

KEY COMPONENTS OF THE RATING METHODOLOGY

- + Door-to-Door Collection
- + Segregation at source
- + Sweeping of public, commercial and residential areas (no visible eyesores on streets)
- + Waste Storage Bins, Litter Bins and material recovery facility
- + Bulk Waste Generators compliance
- + Scientific Waste Processing, Scientific Landfilling and C&D Waste Management
- + User Fees, Penalties, Spot Fines for littering and Enforcement of Ban on Plastic
- + Citizen grievance redressal and feedback system
- + Eradication of crude dumping of garbage and dump remediation
- + Cleaning of storm drains and surface of water bodies
- + Waste Reduction
- + Visible beautification in the city



VERIFICATION MECHANISM – to ensure a standardised, transparent and robust rating system

- Cities fulfilling the necessary conditions for Garbage Free Star Rating (any rating of 1 to 7 stars) will have to carry out self-assessment and self-verification as per the methodology of the protocol. Upon satisfactory verification, the Municipal Commissioner/ Chief Officer/ Chairperson of the city may self-declare Garbage-Free Star Rating (any rating of 1 to 7 stars) of the city and notify it by a public notification and communicate the same to MoHUA through the State Government
- To ensure robustness of Garbage Free Star Rating, MoHUA will take up independent verification and validation through a third party agency. MoHUA's third party verification and certification will be carried out only for 3-star, 5-star and 7-star garbage free ratings. The State Governments at their discretion may take up similar third party verification for the remaining 1-star, 2-star and 4-star ratings. It may be noted that there is no 6-star rating.
- The city has to be certified as Open Defecation Free in order to apply for 3 Star and above Garbage Free Star Rating.
- The third party certification will be valid for one (1) year. The process will have to be re-assessed and re-certified every 12 months.

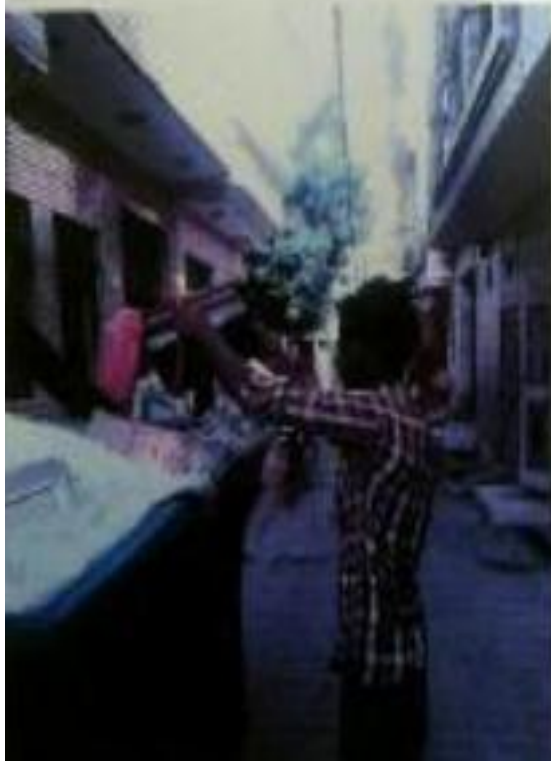
* Public places are areas with open access to public, especially those with high footfall including but not limited to roads, streets, market areas, parks & gardens, transport hubs (railway stations, airports, bus stations, etc.), religious areas, historic sites and other tourist sites, etc.

Condition	1 Star	2 Star	3 Star	4 Star	5 Star	7 Star
I. Litter Collection						
Y percent of household premises in the city are covered by door-to-door collection and transportation of solid waste (through LULU E-authorized garbage collectors)	At least 85 percent	At least 90 percent	100 percent			
J. Segregation at source						
X percent of all household premises have segregation at source (wet, dry & domestic hazardous) maintained till processing	At least 75 percent	At least 80 percent	At least 85 percent	100 percent		
K. Sweeping of public, commercial and residential areas						
X percent of the public & commercial (and residential, if applicable) areas have daily (or twice) sweeping, if applicable) sweeping	100 percent Public & commercial areas		100 percent Public, commercial & residential areas		100 percent Public & commercial areas have twice daily sweeping including night sweeping and residential areas have daily sweeping	
L. Litter Bins, Waste Storage and Material recovery facility*						
A. Litter Bins: Two (two) Segregated (Blue & Green) Litter bins are available in X percent of public and commercial areas, wherever 50 – 100 meters, as required in the locality (Waste is only deposited in such bins - No Littering or Spill over of waste)	At least 25 percent	At least 50 percent	At least 80 percent	100 percent		
B. Waste Storage (secondary storage): Waste storage bins are placed at strategic locations	100 percent (except: City is exempt from this condition if the city is a Smart City. It does not have waste storage bins / no secondary storage. Waste is directly transferred from generation premises to transport chain vehicles with a withdrawal/return slip, to processing centre (verification will be done)					
C. Availability of Material recovery facility for garbage collection, storage, recycle, processing and sale) in adequate numbers, (within maximum 5 km radius)	Fac. clean-up, space identified for facility		Facility fully functional			
M. Bulk Waste Generators Compliance						
Bulk Waste Generators in all premises are - (1) doing on-site processing of wet waste generated, including sludge and garden waste OR Organic waste from DMUs is collected by mobile-composting unit/vehicle to UL's decentralized composting processing plants. In such cases the Bulk Waste Generator will have to pay the processing fee at a pre-set commercial rate. (2) Handling/over-segregated dry wastes to authorized waste pickers or waste collectors	Not to start	All Bulk Waste Generators, as defined by SWM Rules 2016, including DMUs identified and issued official notice for compliance with SWM Rules 2016.	All commercial Bulk Waste Generators, as defined by SWM Rules 2016	All Bulk Waste Generators, as defined by SWM Rules 2016, including DMUs	All Bulk Waste Generators, as defined by SWM Rules 2016, including DMUs as well as non-domestic establishments generating more than 50 kilograms of waste per day	
N. User Charges, Penalties, Fines and Enforcement of San on Plastics						
A. User Charges						
1. Affordable & differential user charges for waste collection and transportation being collected	System has been framed including user charges for waste collection and transportation	Collected at least from commercial, institutional and industrial establishments	Collected from all household premises including residential, commercial, institutional and industrial establishments			
2. Waste & sustainable user charges for waste collection and transportation being collected				Collected from all household premises including residential, commercial, institutional and industrial establishments		
B. Penalties and spot fines: Different penalty spot fines for non-segregation and drying and non-compliance of SWM Rules 2016	Notified		Implemented in 100% premises including drying in storm water drains and water bodies			
C. Plastic Ban: Ban on the use, sale and storage of non-biodegradable plastic bags less than 50 microns (Carry bag and less than 80 microns only shall be permitted), in compliance with Plastic Waste Management Rules 2016	Implementation of ban		Notification and enforcement of ban as well as enforcement of user fee by ULs on use, sale and storage of plastic bags more than 50 microns	Complete ban on all plastic bags		
OS. Scientific Waste Processing, Scientific Landfilling and C&D Waste Management						
A. Waste Processing: X percentage of waste generated is processed						
	At least 25 percent	At least 50 percent	At least 75 percent	100 percent		
B. Scientific Landfill						
Land for dumping identified either in own city or other city, may not be scientific landfill			Remaining unprocessed waste is transported to Scientific Landfill either within the city or to another city	Only Process rejects are transported to Scientific Landfill either within the city or to another city		
C. C&D Waste Management						
A. Facilitation of use/processing or recycling of C&D waste (primarily for bulk waste generators)	Notification of charges for collection, transportation, processing and disposal of C&D Waste	Designated Facility operates with 50 percent of C&D waste generated is used/ processed within municipal limits or in a designated C&D recycling plant	Designated Facility operates with 75 percent of C&D waste generated is used/ processed within municipal limits or in a designated C&D recycling plant	100 percent of C&D waste generated is used/ processed within municipal limits or in a designated C&D recycling plant		
B. Facilitation of collection of C&D waste from premises of retail (non-bulk) occasional generators or designer of collection points with reasonable distance (Max 5 KM)			75 percent of municipal limits covered	100 percent of municipal limits covered		
C. Provisions made for use of material made out of C&D Waste in X percent of municipal construction activity, including in non-structural concrete, paving blocks, lower layers of road pavements, lower colony roads etc.			4 percent of municipal construction activities	10 percent of municipal construction activities	More than 15 percent of municipal construction activities	
OR. Urban Technical Redressal and Feedback System						
At least Y percent of households (At least 1 member in each household) should have downloaded the App/equivalent grievance redressal platform and Y percent of complaints related to Solid Waste Management received on Swachhata App/equivalent grievance redressal platform are marked within SLA	Swachhata App/equivalent grievance redressal platform is in place and At least 5 percent of households have downloaded	At least 5 percent of households 50 percent	At least 10 percent of households 75 percent	At least 25 percent of households 75 percent	At least 35 percent of households 80 percent	At least 50 percent of households 100 percent
OR. Sanitary Remediation						
Remediation of all identified disputes in the city	Not to start	Plan has been approved including financial closure	Plan has been approved and work commenced	50 percent work as per remediation project plan has been completed	75 percent work as per remediation project plan has been completed	100 percent work as per remediation project plan has been completed
S. Drains and Water Bodies						
No visible solid waste in storm water drains and water bodies in 100 percent of premises under UL's jurisdiction	100 percent of water bodies (including but not limited to ponds, rivers, tanks, streams, etc.) under UL's jurisdiction	100 percent of water bodies (including but not limited to ponds, rivers, tanks, streams, etc.) under UL's jurisdiction	100 percent of water bodies and storm water drains under UL's jurisdiction			
T. Waste Reduction* - Application of 3R Principles in SWM						

वार्डों में स्रोत पृथक्कीकरण का कार्य



नगर पालिका परिषद् मोदीनगर, गाजियाबाद



नगर पालिका वार्ड नं. १०, मादानगर, गाजियाबाद

सन्देश



पॉलिथीन उपयोग है विनाशक, इसका परिणाम है घातक





प्रतिबंधित पॉलिथीन व प्लास्टिक तथा थर्मोकोल की सामग्री के अवैध विनिर्माण, संग्रहण व उपयोग के सम्बन्ध में हेल्पलाइन पर या संबंधित अधिकारी से संपर्कित करें :



2 अक्टूबर, 2018 से डिस्पोजल पॉलिथीन कैंरीबैग एवं प्लास्टिक, थर्मोकोल के बने डिस्पोजल कप-प्लेट इत्यादि पर उत्तर प्रदेश सरकार ने पूर्ण रूप से प्रतिबन्ध लगा दिया है।





स्वच्छ भारत मिशन (नगरीय) निदेशालय, उत्तर प्रदेश
नगर विकास विभाग, उत्तर प्रदेश

स्वच्छ प्रदेश, हमाना उत्तन प्रदेश

संबंधित अधिकारी का नाम :
निकाय का नाम :
जिला :
मोबाइल नं.:

हेल्पलाइन नंबर: 1800 1800101

मुरारी लाल
सफाई एवं खाद्य निरीक्षक


हरीश कुमार
सफाई एवं खाद्य निरीक्षक


अनुज कौशिक
अधिसायी अधिकारी
एवं समस्त कर्मचारीगण

अशोक माहेश्वरी
अध्यक्ष
एवं समस्त सदस्यगण

नगर पालिका परिषद, मोदीनगर, जनपद – गाजियाबाद

10X8






प्लास्टिक बैग के इस्तेमाल से जन्म लेगा कूड़ासुर


जिससे होगा सबका विनाश और पर्यावरण का सर्वनाश

हमारे प्लास्टिक बैग के अंधाधुंध उपयोग के कारण पूरी दुनिया में प्लास्टिक बैग की मात्रा इतनी बढ़ जा रही कि वो कूड़ासुर बनकर हमारे पर्यावरण का विनाश करने लगेगा।

प्लास्टिक बैग को उपयोग से होने वाली हानियाँ:
- प्लास्टिक दुष्ट खरब हो रहे हैं। - जीव-जंतु मर रहे हैं। - भूमि, जल और वायु प्रदूषित हो रहे हैं। - वास्तविक जल पील रहे हैं।
अगर हमने प्लास्टिक बैग के उपयोग को नहीं रोकना तो जल्द ही कूड़ासुर का विशाल-विनाशकारी रूप हमें दिखने को मिलेगा।

जूट, कपड़ा या कागज बैग का इस्तेमाल करें!





प्लास्टिक बैग मुक्त उत्तर प्रदेश
बैताने उत्तर प्रदेश

जनपद संबंधी सम्पर्क हेतु हेल्पलाइन नं.
18001800101

स्वच्छ भारत मिशन (नगरीय) निदेशालय, उत्तर प्रदेश
नगर विकास विभाग, उत्तर प्रदेश

मुरारी लाल
सफाई एवं खाद्य निरीक्षक

हरीश कुमार
सफाई एवं खाद्य निरीक्षक

अनुज कौशिक
अधिसायी अधिकारी
एवं समस्त कर्मचारीगण

अशोक माहेश्वरी
अध्यक्ष
एवं समस्त सदस्यगण

नगर पालिका परिषद, मोदीनगर, जनपद – गाजियाबाद

नगर पालिका परिषद् मोदीनगर, गाजियाबाद